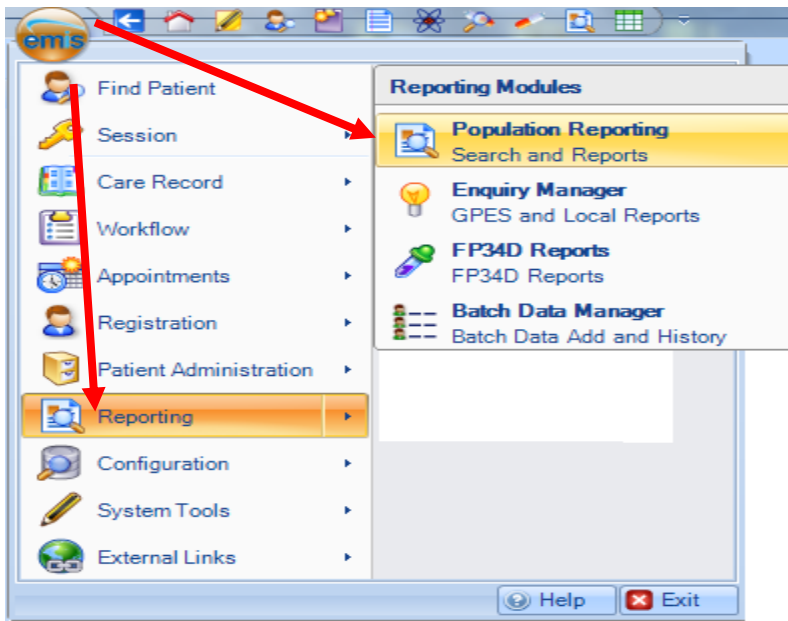
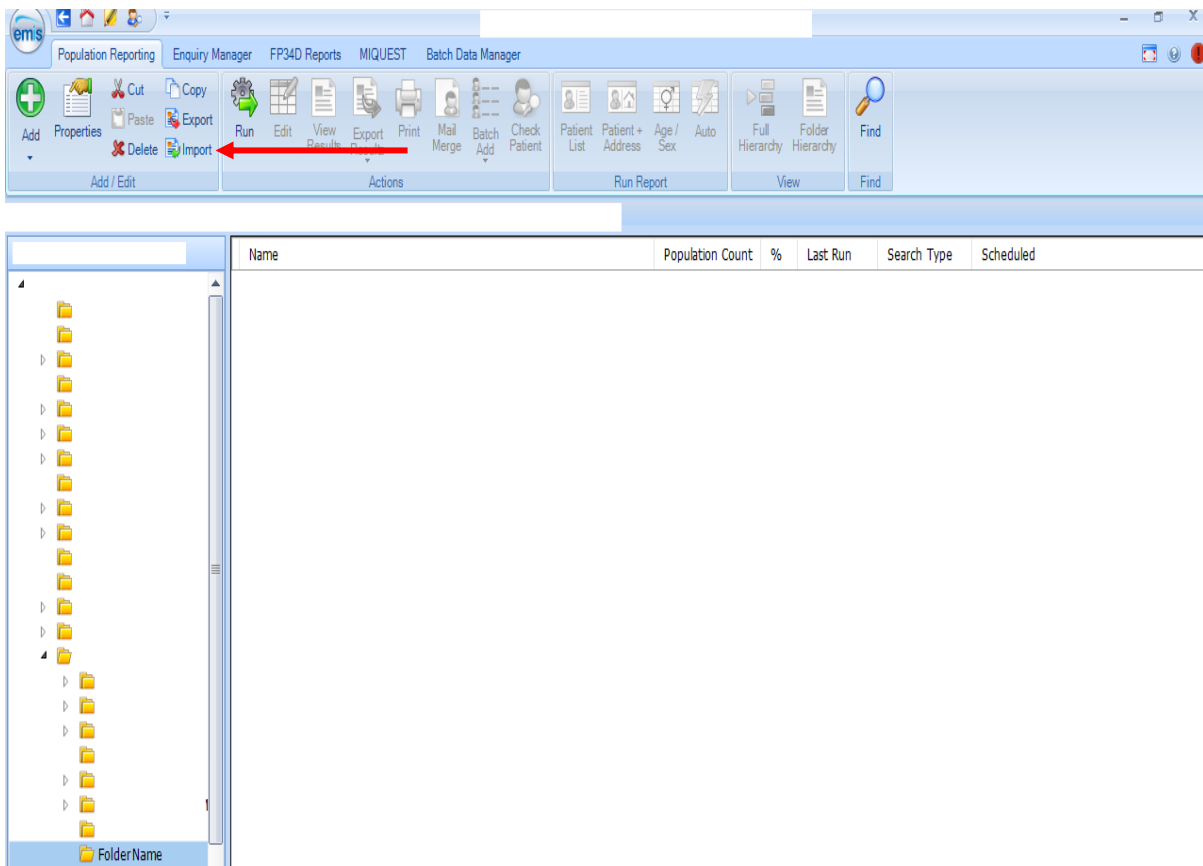



## High Dose Inhaled Corticosteroids (ICS): Emis Web Guide Importing a Search

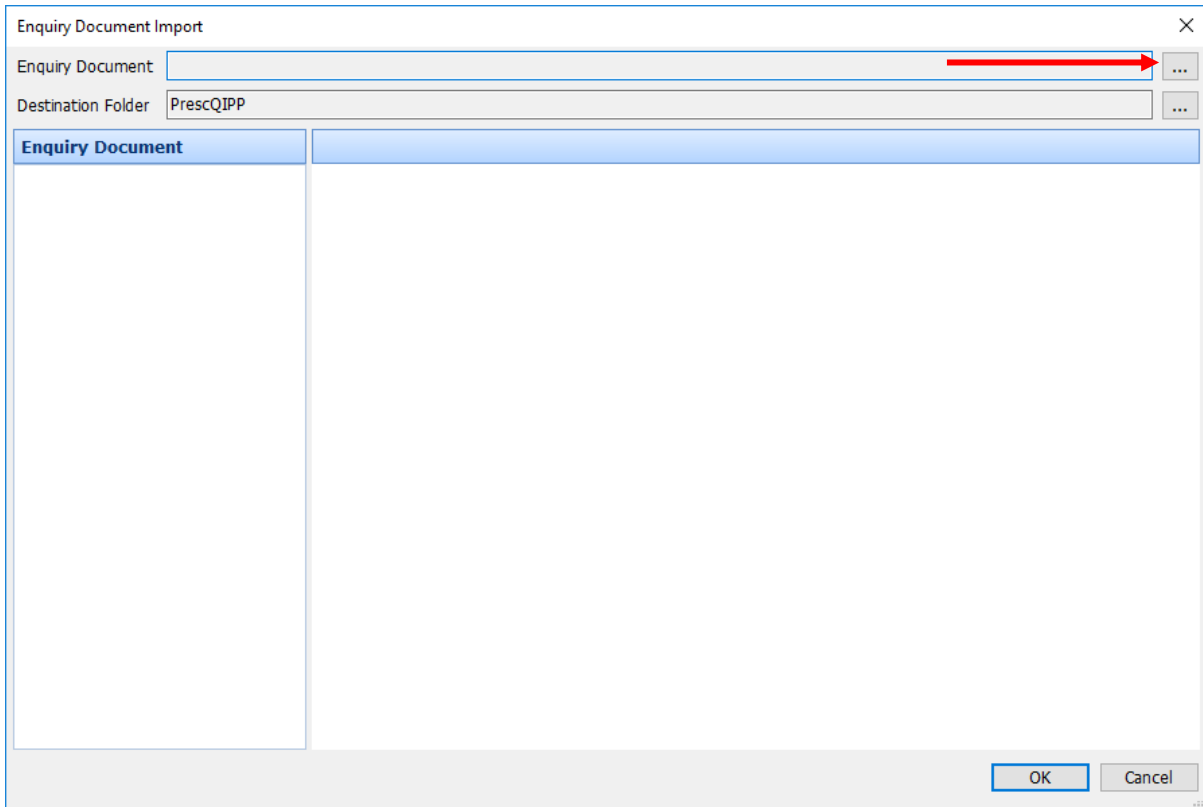
1. Open EMIS Web and go to Reporting> Population Reporting



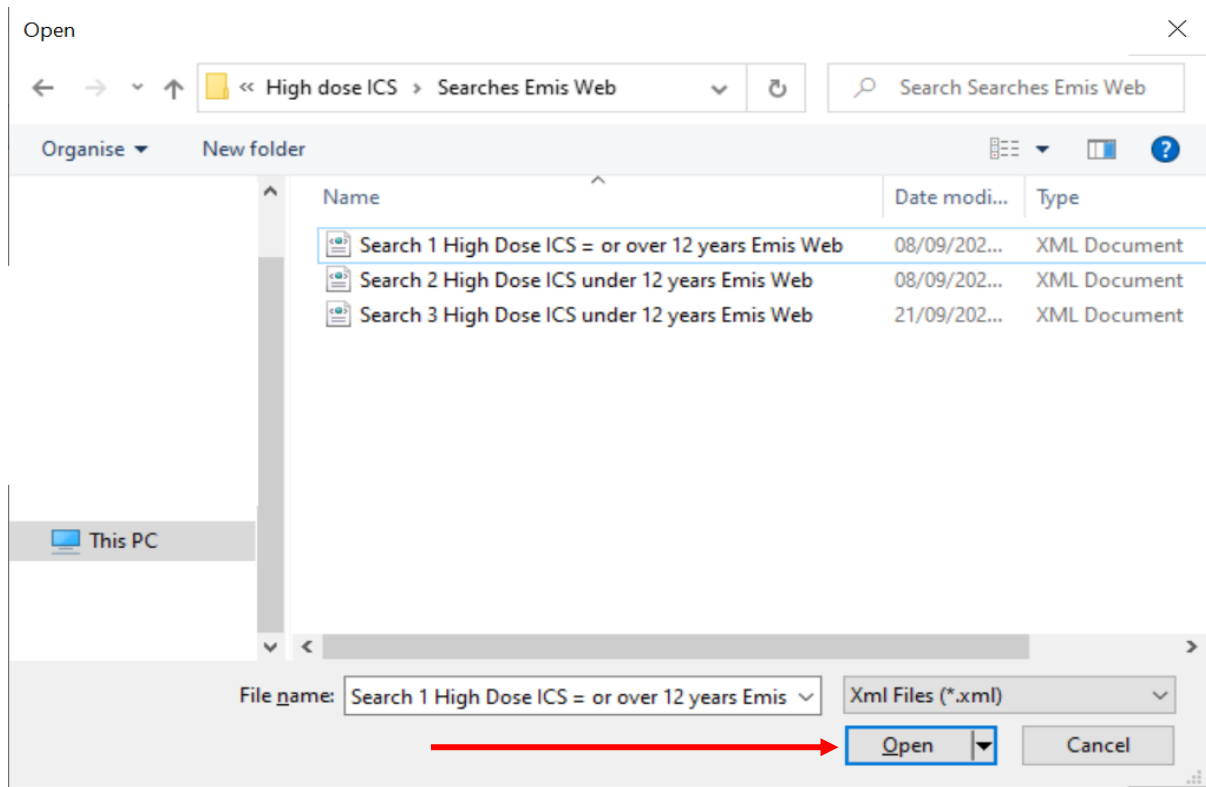
2. Select the folder within population reporting in which you wish to save your search and click on 'Import'.



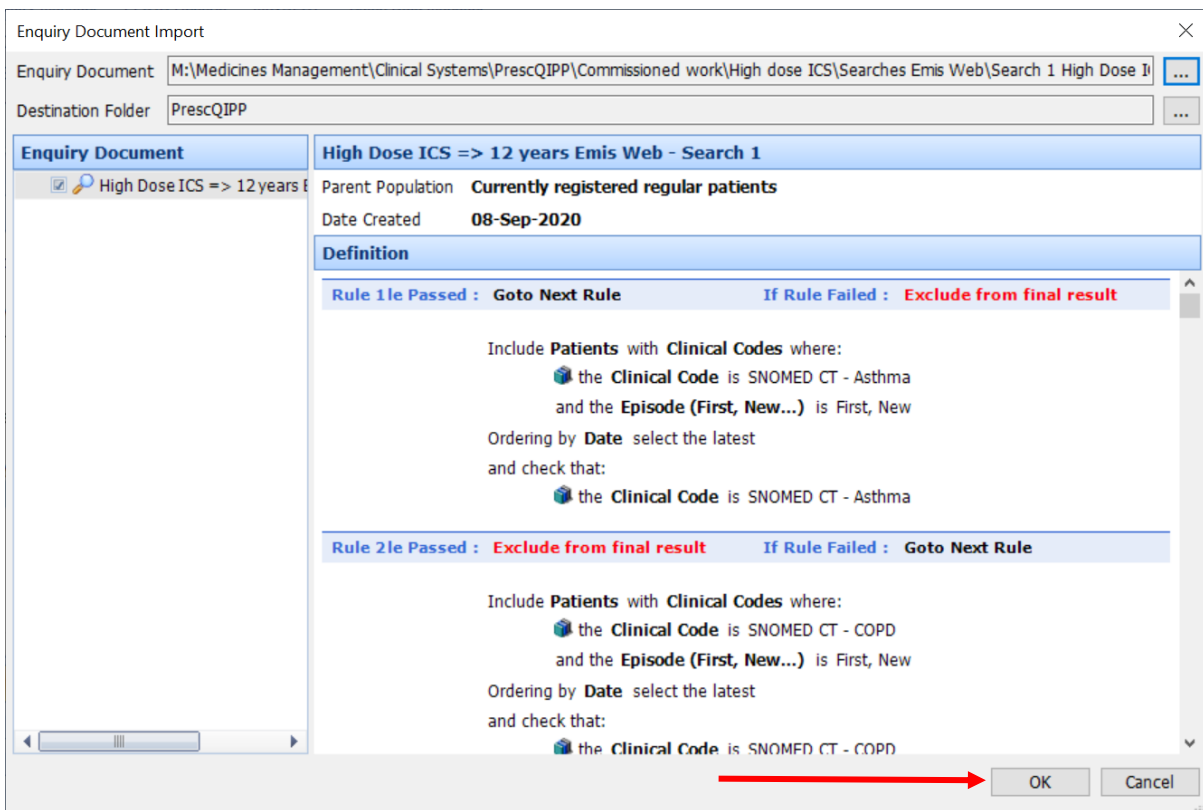
3. The following screen will appear. The 'Enquiry Document' is the search that you want to import, click on 



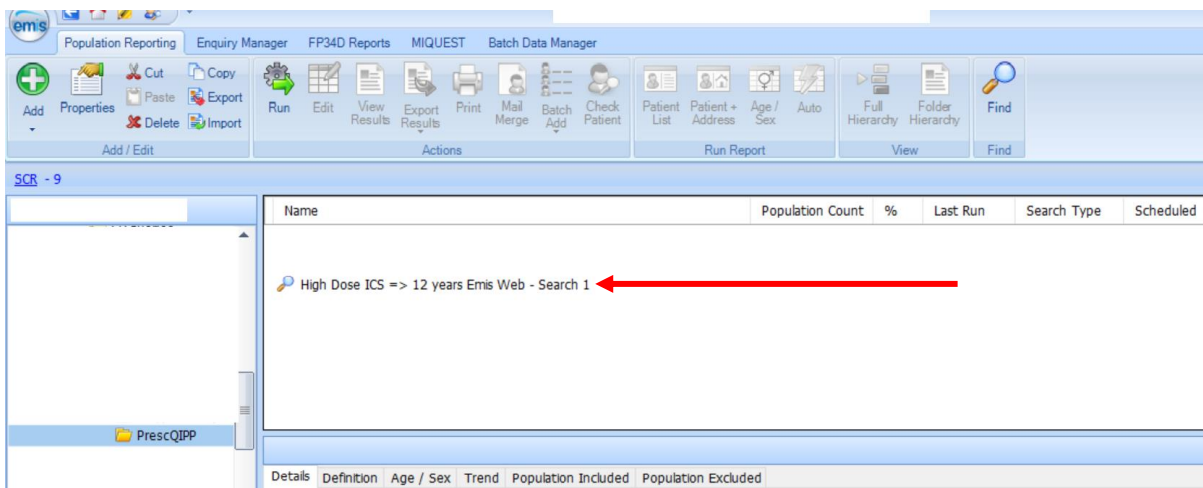
4. Select the search file and then click 'Open'.



5. On this screen click 'OK'.



6. The search will appear in your searches folder as shown below. Repeat the process for searches 2 and 3.



7. The searches are now ready for you to run.